

A PART OF THE BAY WINDS PLANNED UNIT DEVELOPMENT

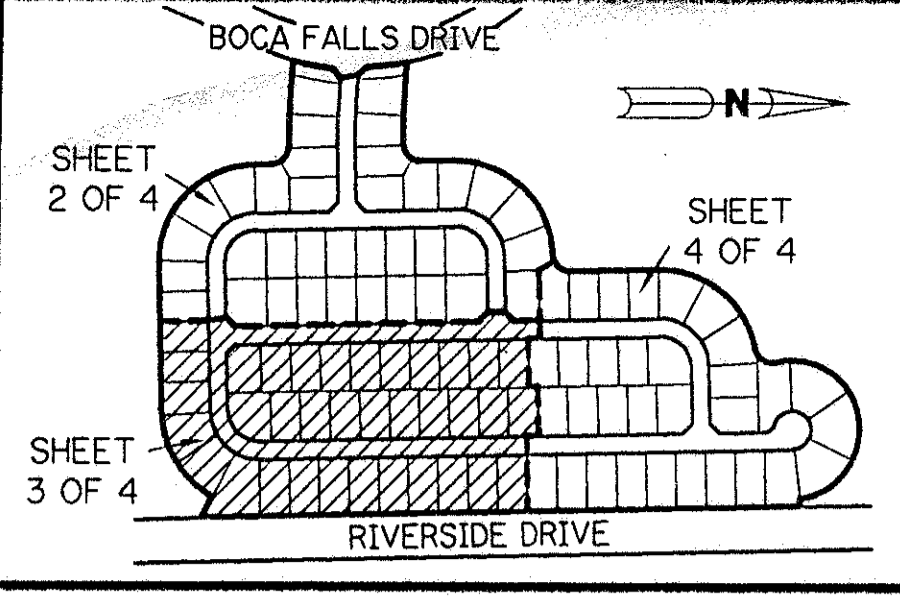
BOCA FALLS - PARCEL "K"

BEING A REPLAT OF ALL OF PARCEL "K" ACCORDING TO THE PLAT OF BOCA FALLS - PLAT ONE AS RECORDED IN PLAT BOOK 73, PAGES 124 THROUGH 131, INCLUSIVE, OF THE PUBLIC RECORDS OF PALM BEACH COUNTY, FLORIDA. LYING IN SECTION 22, TOWNSHIP 47 SOUTH, RANGE 41 EAST

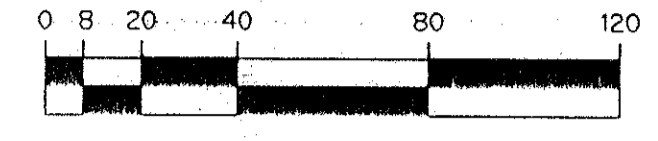
SHEET 3 OF 4 AUGUST, 1994

THIS INSTRUMENT PREPARED BY PERRY C. WHITE, P.L.S. 4213 STATE OF FLORIDA LAWSON, NOBLE AND ASSOCIATES, INC. ENGINEERS PLANNERS SURVEYORS WEST PALM BEACH, FLORIDA

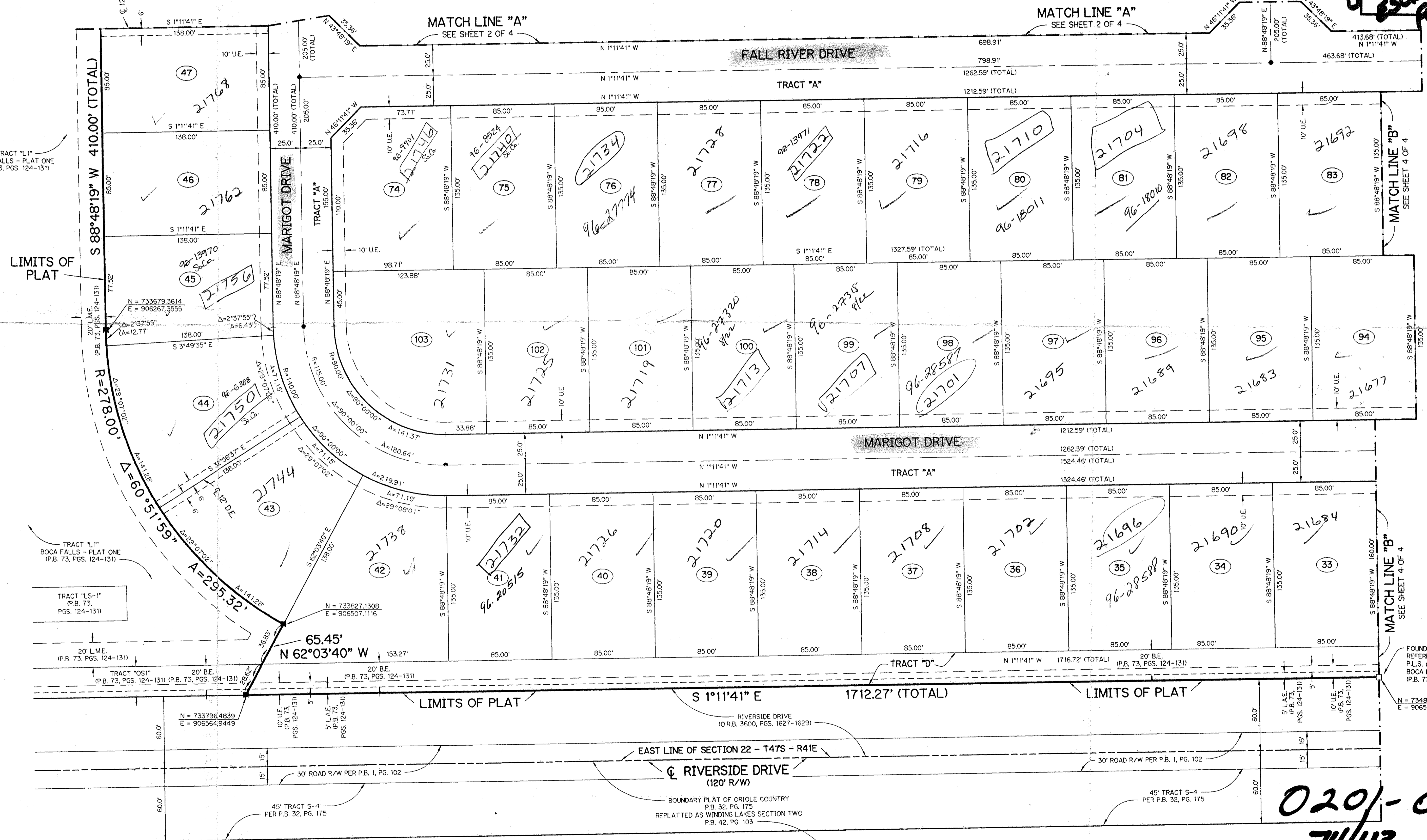
113
PET. 80-47 B
ROADS 9/1399
LAW. #0001
ESCROW AGENT
FOR PARCEL
& SCHOOLS



- LEGEND:**
- - PERMANENT REFERENCE MONUMENT, PLS #4213
 - - PERMANENT CONTROL POINT, PLS #4213
 - △ - DELTA ANGLE
 - A - ARC LENGTH
 - B.E. - BUFFER EASEMENT
 - D.E. - DRAINAGE EASEMENT
 - L.M.E. - LAKE MAINTENANCE EASEMENT
 - N.R. - NOT RADIAL
 - N.T.S. - NOT TO SCALE
 - O.R.B. - OFFICIAL RECORD BOOK
 - P.B. - PLAT BOOK
 - P.G.S. - PAGES
 - P.L.S. - PROFESSIONAL LAND SURVEYOR
 - R - RADIUS
 - R/W - RIGHT-OF-WAY
 - U.E. - UTILITY EASEMENT
 - N = 1000.000
 - E = 1000.000 - STATE PLANE COORDINATES



SCALE: 1" = 40'



SUBDIVISION * Boca Falls Parcel K
BOOK 74, PAGE 113
FLOOD ZONE AO-1
GUAD #69
SE 80-47
PUD NAME Same
TAZ-778

FOUND PERMANENT REFERENCE MONUMENT, PLS #4213 BOCA FALLS - PLAT ONE (P.B. 73, PGS. 124-131)
N = 734800.4864
E = 906543.6745

0201-018
74/113

BOCA FALLS - PARCEL "K"